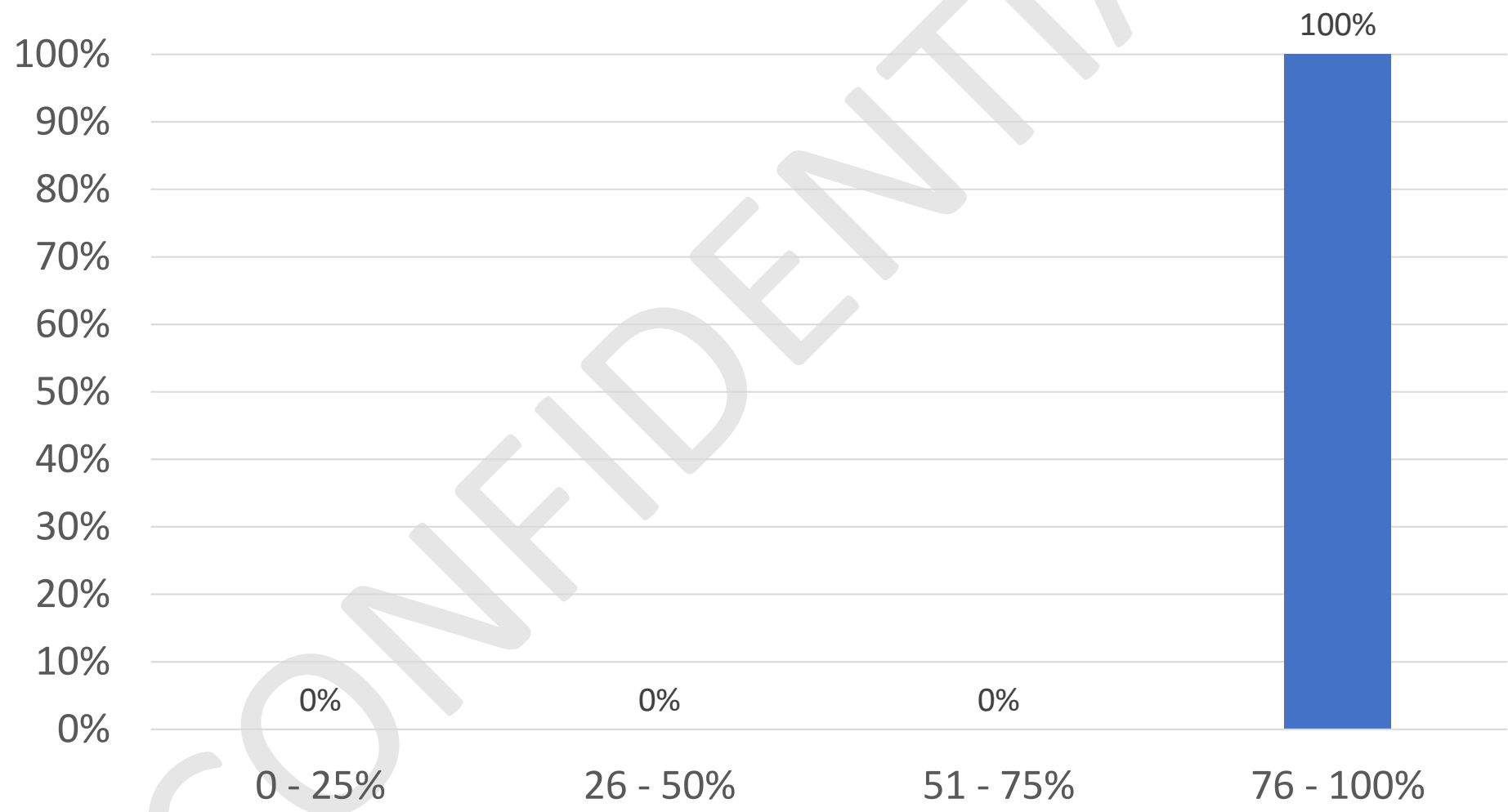


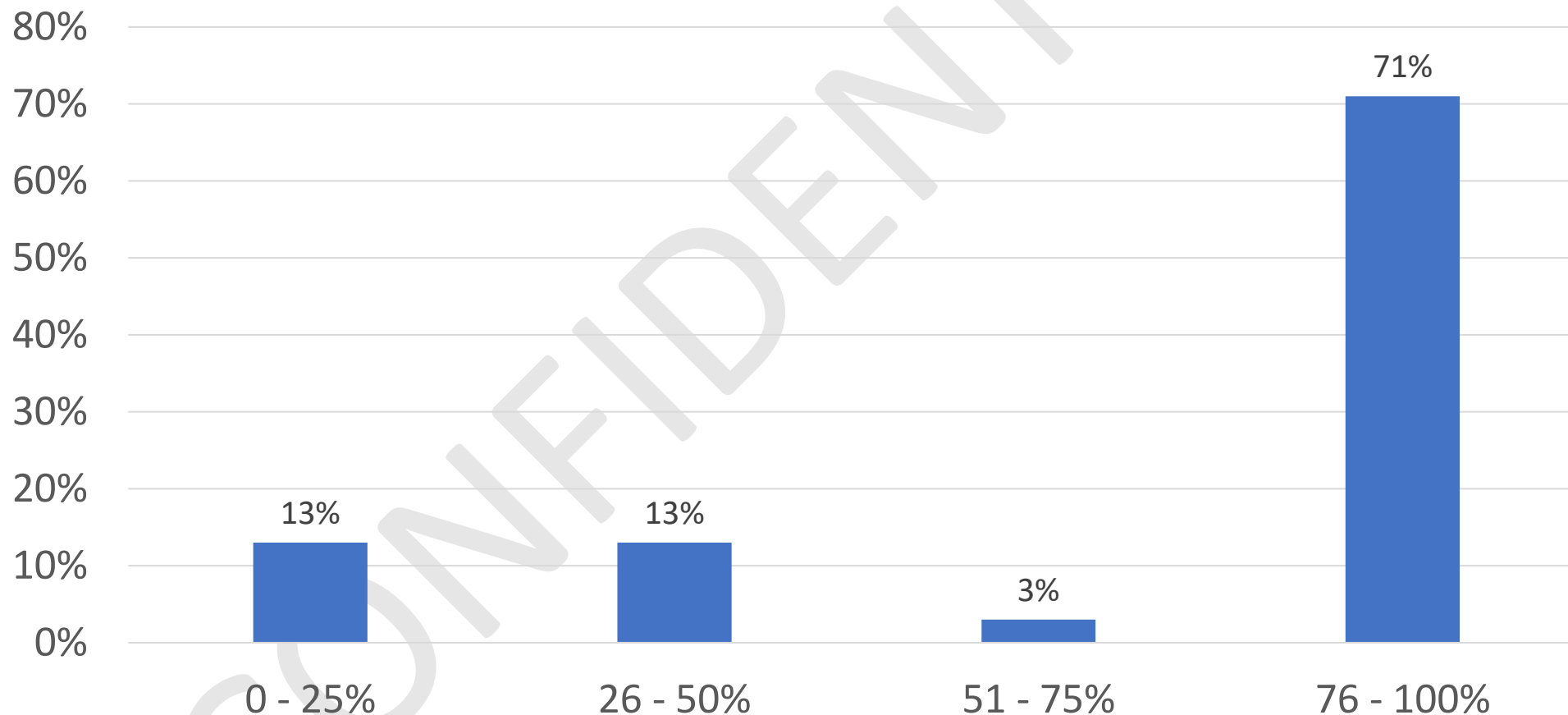


ASHA COVID-19 Survey: March 15 - 17, 2021

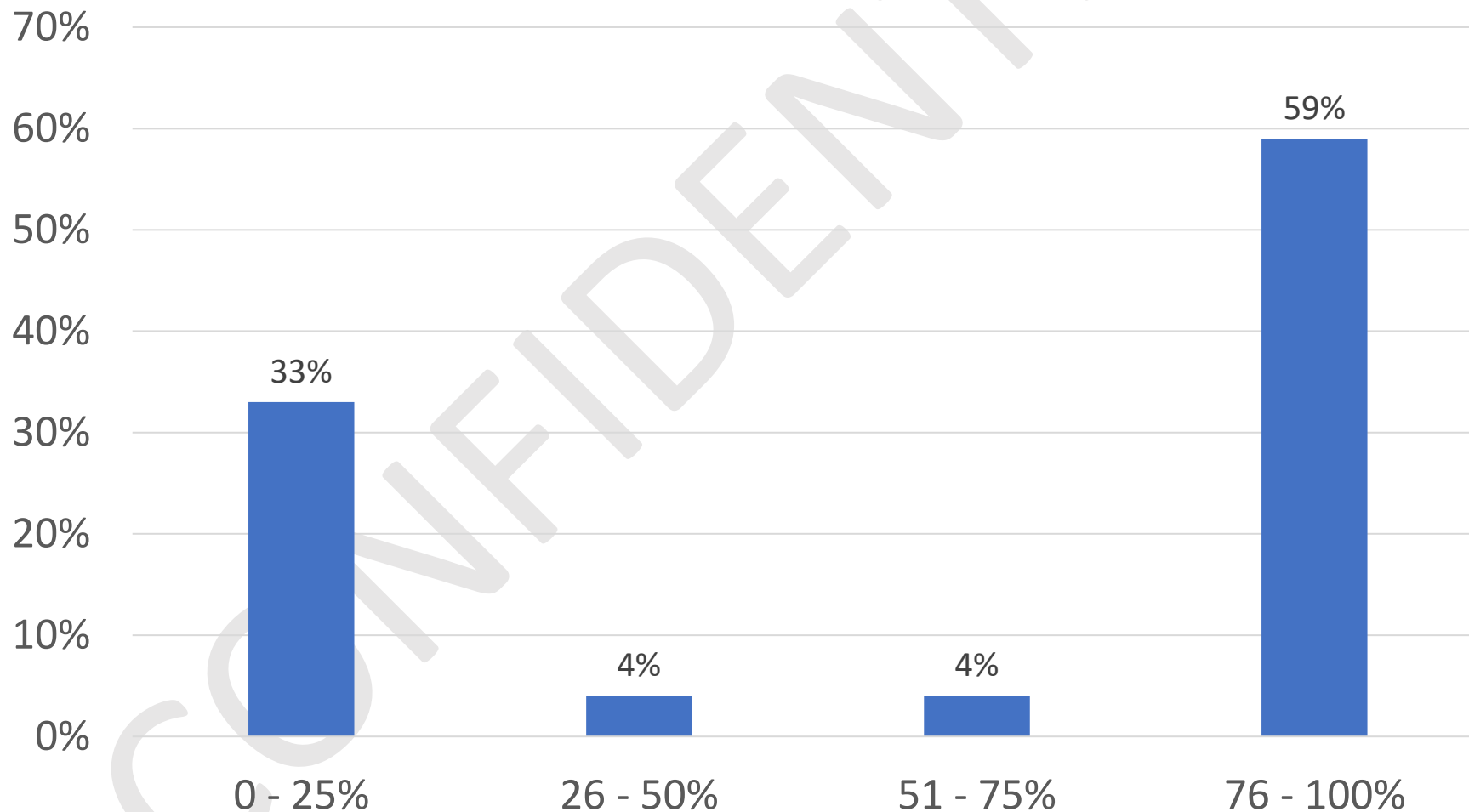
What % of your communities have either successfully completed or are currently scheduled for a third COVID-19 vaccine clinic?



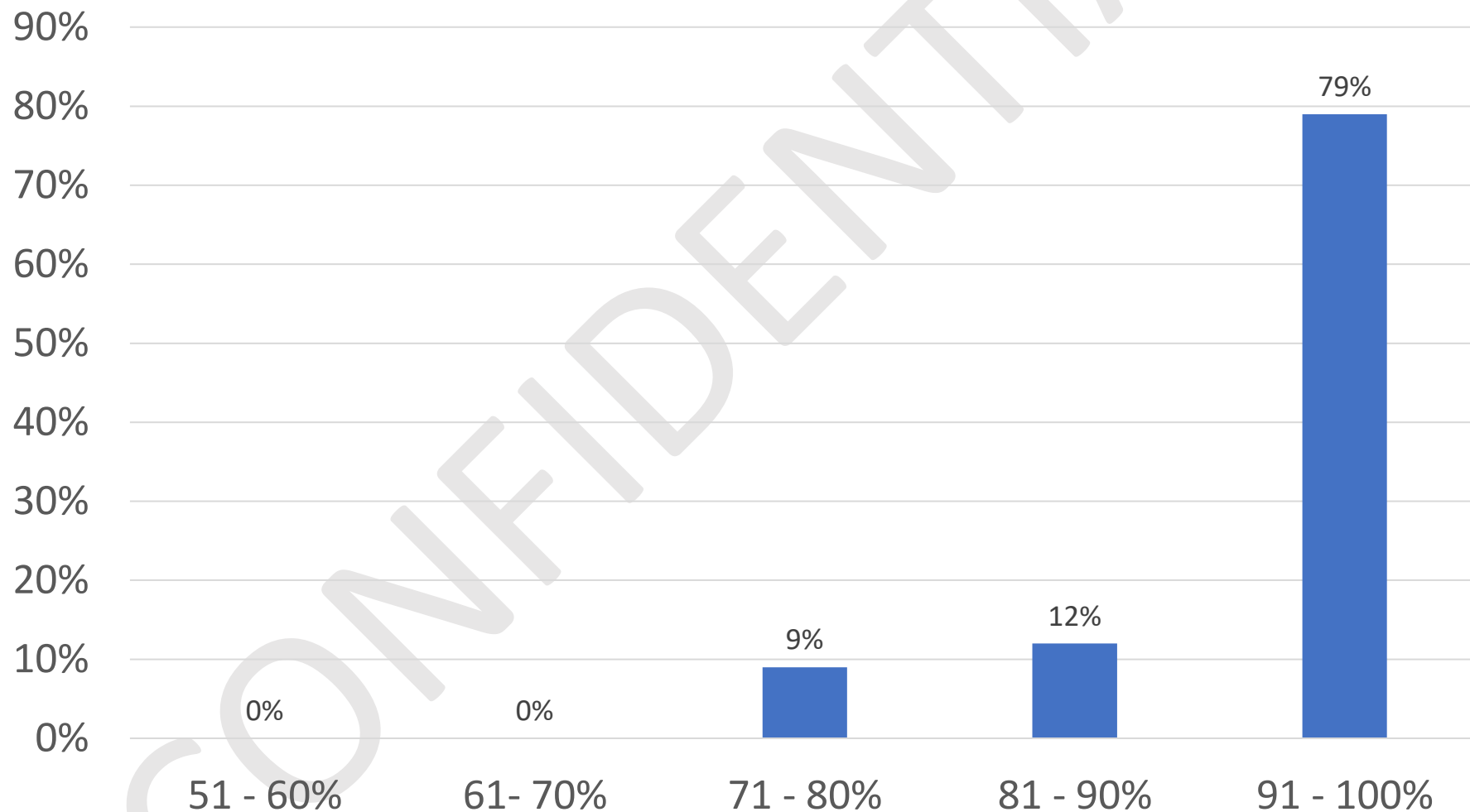
If you have standalone IL communities, what % have either successfully completed or are currently scheduled for a 1st and 2nd COVID-19 vaccine clinic?



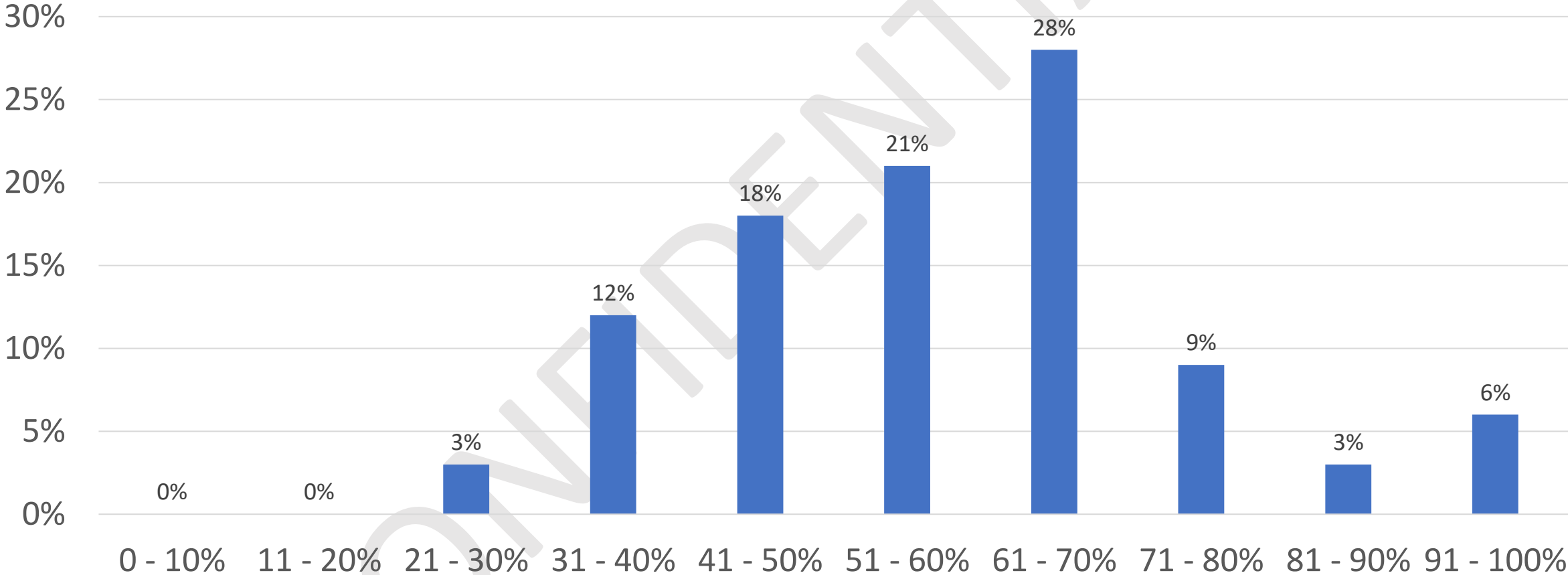
If you have standalone IL communities, what % have either been successfully completed or are currently scheduled for a third COVID-19 vaccine.



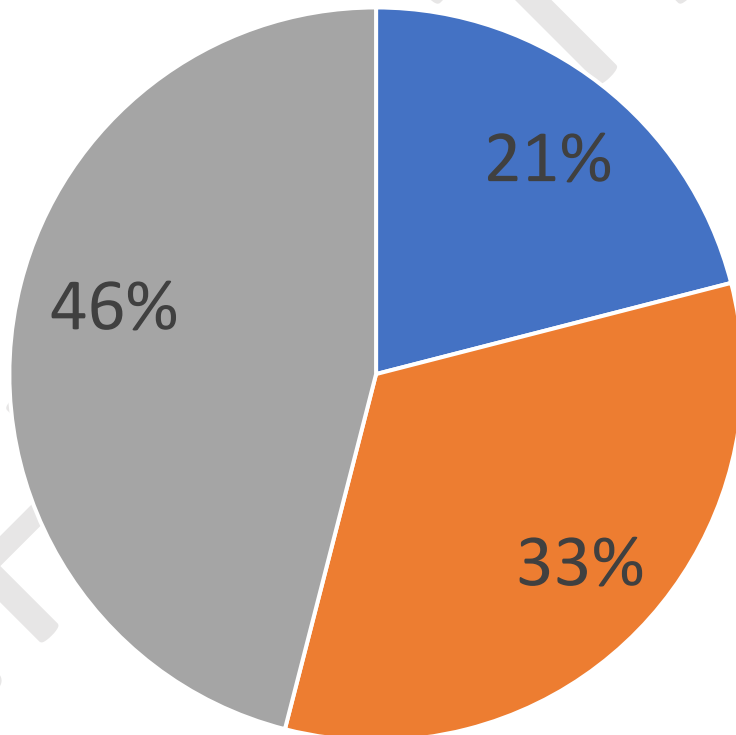
What is the average take up rate among residents in your communities that have had COVID-19 vaccine clinics?



What is the average take up rate among staff in your communities that have had COVID-19 vaccine clinics?



Are you planning to mandate staff vaccination at some point in the next five months?



■ Yes ■ No ■ Undecided

Please indicate which states you operate in that have updated their visitation policies in the last 30 days. Please list states:

- Indiana, Connecticut, North Carolina, South Carolina, Georgia, Florida
- Tennessee, Virginia, Pennsylvania
- Michigan and Illinois
- Arizona, California, Utah, Colorado, Oregon
- Texas
- Connecticut, Pennsylvania, Missouri, Michigan, Ohio, Kentucky, Indiana, Illinois, Virginia, Kansas
- California, Oregon, Washington, Arizona, Texas, Georgia, Florida
- Texas
- Florida, North Carolina, Tennessee, California, Arizona, Texas, Georgia, Alabama, South Carolina, New Hampshire, Pennsylvania
- New Hampshire, Connecticut, Mass.
- Washington, Oregon
- South Carolina, Pennsylvania, Indiana, Louisiana, Florida
- Connecticut
- Florida, Wisconsin, Michigan
- Vermont, Connecticut, Delaware, Illinois, and Michigan have begun allowing indoor or outdoor visits in the past 30 days. The following are states that revised their policy on visitation in the past 30 days: Missouri, New Hampshire, Rhode Island, Tennessee, Idaho, and Kentucky

Please indicate which states you operate in that have updated their visitation policies in the last 30 days. Please list states (cont.):

- Texas, Oklahoma and Arkansas
- New York, Ohio, Michigan, Pennsylvania, North Carolina
- Minnesota (just in the last 3 days)
- California
- New Jersey
- Just Louisiana
- Missouri, Florida
- Pennsylvania
- Washington is working on it
- Utah, Texas, Missouri, Michigan, Maryland, Georgia, Washington, Oregon, Idaho, Nevada, New Mexico, Montana, Wyoming, Nebraska, Iowa, Oklahoma, South Dakota, Minnesota, Illinois, Tennessee, Florida, South Carolina, Ohio, Indiana, Wisconsin
- Pennsylvania, Maryland, Virginia
- Virginia