

CAPITOL CONNECTION



SENIORS HOUSING
POLITICAL ACTION COMMITTEE

Legislative Spotlight:

Expanding Veterans' Options for Long Term Care Act

ASHA has been working to advance important legislation that would expand veterans' access to assisted living services by carrying out a pilot program to assess the effectiveness of serving veterans in assisted living communities.

The Expanding Veterans' Options for Long Term Care Act (S. 4169) was introduced on May 10th by Senate Veterans' Affairs Committee Chairman Jon Tester (D-MT), Ranking Member Jerry Moran (R-KS), and U.S. Senator Patty Murray (D-WA).

Specifically, S. 4169 would:

- Create a three-year pilot program to give veterans who are currently residing in nursing homes and other eligible veterans, the option to transfer into a Medicaid certified assisted living community.
- Include provisions regarding program criteria and locations, mandating minimum rural locations and high need areas.
- Require assisted living communities be Medicaid certified, i.e., those communities that participate in the Medicaid Waiver program would be eligible.
- Cover room and board (unlike the Medicaid waiver program), therefore resulting in a payment that is higher than home care and yet lower than nursing homes, resulting in cost savings.
- Identify several reporting obligations including a recommendation to extend program.

This legislation is a commonsense, cost efficient and compassionate effort to allow veterans to live in a community that best suits them. It presents our industry with a great opportunity to qualify (care received) and quantify (savings to the VA) the benefits of assisted living and create more awareness among policymakers about our value proposition. ASHA has been actively working to secure co-sponsors in the Senate and to advance the legislation in the U.S. House of Representatives. ASHA has activated its grassroots advocacy program to support efforts in seeking co-sponsors.

**Please Update
Your Records**
New Office Address
for ASHA and
Seniors Housing Political
Action Committee

Seniors Housing PAC Supports Events for Senator Lisa Murkowski (R-AK) and Senator Dick Durbin (D-IL)

ASHA's Seniors Housing PAC has been actively supporting members of Congress by hosting fundraisers across the country and in Washington, DC. These events are a great way to connect with elected officials and educate them on the needs of the senior living industry.

ASHA members Bill and Bob Thomas (Senior Star) recently hosted an event in Tulsa, OK for Senator Lisa Murkowski (R-AK) that the Seniors Housing PAC co-hosted.

ASHA President David Schless attended the event and reports that it was extremely successful both in terms of the dollars raised for Senator Murkowski and the discussions held over several hours.

This meeting lent itself to a meaningful, in-depth dialogue about our industry and the vital role senior living provides to America's seniors, including those with Alzheimer's and

America's veterans. ASHA's VP of Government Affairs Jeanne McGlynn Delgado also attended an event the night before with Senator Murkowski in Washington, DC, so the timing of the event could not have been better to emphasize the priorities of senior living.

ASHA's SH PAC, along with Argentum's Silver PAC, also recently hosted a fundraiser for Senator Richard Durbin (D-IL) in Chicago. Several Chicago-based leaders supported and attended this event where we had an engaging and thoughtful discussion with the Senator about the issues facing the industry including the workforce shortage. Senator Durbin has been a steadfast champion of immigration reform in the Senate and strongly believes that immigration reform is not only a means of meeting the workforce needs, but will also strengthen the economy and protect the border.



Senator Lisa Murkowski and
ASHA President David Schless



Attendees (L-R): John Atkinson, Marsh; Jeanne McGlynn Delgado, ASHA; Pat Lee, Senior Lifestyle; Tara Cope, Vi Living; Senator Dick Durbin (D-IL); Peter Smith, Enlivant; Erin Donaldson, LCS; Paul Williams, Argentum; Angela Schnepf, LeadingAge Illinois; Bob Havens, Brookdale Senior Living

ASHA's Public Policy Committee serves as the steering committee for the Seniors Housing Political Action Committee.

Disbursements to the campaigns of federal candidates are made according to a broad strategy that includes supporting Federal candidates who are knowledgeable, supportive, and key to the advancement of public policy that impacts the seniors housing industry. A complete listing of SH PAC contributions to Members of Congress will be highlighted in the next edition of the *Capitol Connection*.

2022 ASHA Public Policy Committee Members



Jerry Finis

Pathway to Living
2022 Public Policy
Committee Chair



Ken Assiran

Capital
Health Group



Robb Chapin

Bridge
Investment Group



Donny Edwards

Sagora Senior Living
2022-23 SH PAC Chair



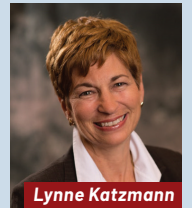
Jerry Frumm

Senior Lifestyle



Jeff Hettelman

Brightview
Senior Living



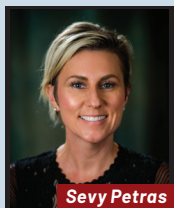
Lynne Katzmman

Juniper
Communities



Michelle Kelly

National Health
Investors



Sevy Petras

Priority Life Care



Shannon Rusk

Oppidan



Tim Sanders

Ventas



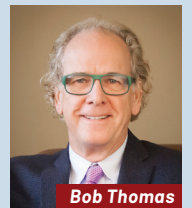
Deidre Schönfeldt

Hanson Bridgett



Christian Sweetser

Erickson
Senior Living



Bob Thomas

Senior Star

Current 2022 Chairman's Circle Level Contributors*

*as of June 10, 2022

PREMIER \$5,000	Ken Assiran	Capital Health Group	Michael Pokora	Marsh
	John Atkinson	Marsh	Cesar Quirino	Lifestone Link
	Thilo Best	Longview Senior Housing	John Rijos	Chicago Pacific Founders
	Colleen Blumenthal	HealthTrust	Greg Roderick	Frontier Management
	Randy Bufford	Trilogy Health Services	Anja Rogers	Senior Star
	John Cobb	Ventas	Doug Schiffer	Allegro Senior Living
	Donny Edwards	Sagora Senior Living	Wendy Simpson	LTC REIT
	David Freshwater	Watermark Retirement Communities	Josh Stevens	Harbor Point Capital
	Jerry Frumm	Senior Lifestyle	Scott Stewart	Capitol Seniors Housing
	Jim Gray	Bridgewood Property Company	Kathryn Sweeney	Blue Moon Capital Partners LP
	Jim Hands	Salem Equity	Bill Thomas	Senior Star
	Richard Hutchinson	Discovery Senior Living	Bob Thomas	Senior Star
	Joshua Jennings	Cedarhurst Senior Living	Donald Thompson	Senior Living Communities
	Bill Kaplan	Senior Lifestyle	Dale Watchowski	American House Senior Living Communities
	Lynne Katzmann	Juniper Communities	Matthew Whitlock	Berkshire Residential Investments
	Aaron Koelsch	Koelsch Communities	Margaret Wylde	ProMatura Group
	Bob Mercer	Cedarbrook Senior Living		
LEADERSHIP \$2,000 — \$4,999	Matt Alley	Senior Living Investment Brokerage	Eric Mendelsohn	National Health Investors
	Labinot Avdiu	Medication Management Partners	Joel Mendes	JLL
	Caryl Barnes	Bridge Investment Group	Brian Morgan	Primrose Retirement Communities
	Leigh Ann Barney	Trilogy Health Services	George Netscher	SafelyYou
	Evrett Benton	Stellar Senior Living	Max Newland	Kayne Anderson Real Estate Advisors
	Jeff Binder	Senior Living Investment Brokerage	Earl Parker	Commonwealth Senior Living
	Charles Bissell	JLL	Kevin Pascoe	National Health Investors
	Steve Blazejewski	PGIM Real Estate	Wick Peterson	Senior Resource Group
	Jon Boba	Pearl Meyer	Sevy Petras	Priority Life Care
	Dave Boitano	Lument	Alan Plush	HealthTrust
	Matt Bork	Liberty Senior Living	Jason Punzel	Senior Living Investment Brokerage
	Marcus Breuer	Touchmark	Will Purvis	Liberty Senior Living
	Lisa Brush	Blue Lotus Senior Living	Rebecca Randolph	Brinkmann Constructors
	Dwayne Clark	Aegis Living	Jeff Ringwald	Walker & Dunlop
	Bradley Clousing	Senior Living Investment Brokerage	MJ Ritschel	Kisco Senior Living
	Joe Daniels	Direct Supply	Tim Robeson	PGIM Real Estate
	Charles de Vilmorin	Linked Senior	Justin Robins	Senior Lifestyle
	Corey Denman	Direct Supply	Shannon Rusk	Oppidan
	Kirk Domesck	Duane Morris LLP	Melissa Russell	Wells Fargo
	Jason Dopoulos	White Oak Healthcare Finance	Matt Ryan	Houlihan Lokey
	Alexis Evanich	PointClickCare	Ryan Saul	Senior Living Investment Brokerage
	Julie Ferguson	Ryan Companies US, Inc.	Bryan Schachter	Watermark Retirement Communities
	Jerry Finis	Pathway to Living	Dana Scheppmann	PGIM Real Estate
	Luke Gabay	PGIM Real Estate	Dave Schless	American Seniors Housing Association
	John Getchey	ReNew REIT	Jason Schreiber	PNC Real Estate
	Steve Gilleland	Senior Living Investment Brokerage	Bill Sciortino	Discovery Senior Living
	Joel Goldman	Hanson Bridgett	Bill Shorten	Cascade Living Group
	Paul Gordon	Hanson Bridgett	Toby Siefert	Senior Living Investment Brokerage
	Dave Harper	Capital One Healthcare Real Estate	Art Sons	Marsh
	Judd Harper	The Arbor Company	Todd Stone	Ray Stone Inc.
	Donald Husi	Ziegler	Rick Swartz	Cushman & Wakefield
	Bob Karn	Allegro Senior Living	Christian Sweetser	Erickson Senior Living
	Alice Katz	The Vinca Group	Chris Taylor	Capital One Healthcare Real Estate
	Michelle Kelly	National Health Investors	Ben Thompson	Senior Living Communities
	Pam Kessler	LTC REIT	Josh Thompson	Senior Living Communities
	Rodger Lederer	Marsh	Chris Urban	Ambrose Urban Capital Group, Inc.
	Ben Levesque	Cogir Management USA, Inc.	Scott Wallace	Marsh
	Steve Levy	Senior Lifestyle	Joe Weisenburger	LCS
	Scott Lieber	Marsh	Steve Wertman	Cedarhurst Senior Living
	Chip Long	OnShift	Aron Will	CBRE Capital Markets
	Clint Malin	LTC REIT	Mike Williams	English Meadows Senior Living
	Jeanne McGlynn Delgado	American Seniors Housing Association	John Yedinak	Senior Housing News
	Mike McMillen	SafelyYou	Jason Zuccari	Hamilton Insurance

The ABC's of the Seniors Housing PAC

- Actively Engage
- Build Relationships
- Continually Educate

The Seniors Housing PAC is actively engaged in building relationships and continually educating Members of Congress, both Republicans and Democrats. The Seniors Housing PAC gives ASHA the unique opportunity to make its voice heard in Congress on key policy priorities.

Eight 2022 Senate Races to Watch

- **Arizona:** Senator Mark Kelly (D)
- **Georgia:** Senator Raphael Warnock (D)
- **Nevada:** Senator Catherine Cortez Masto (D)
- **New Hampshire:** Senator Maggie Hassan (D)
- **North Carolina:** Open Seat (Senator Richard Burr (R) Retiring)
- **Ohio:** Open Seat (Senator Rob Portman (R) Retiring)
- **Pennsylvania:** Open Seat (Senator Pat Toomey (R) Retiring)
- **Wisconsin:** Senator Ron Johnson (R)

2022 Midterm Elections Outlook

The 2022 midterm election cycle is in full swing with primary elections taking place around the country to determine the candidates for the November 8th general election. With less than six months until election day, here are some of the key factors to watch:

- Republicans will be on offense as they look to take control of the House, buttressed by Democratic retirements and President Biden's lagging approval ratings.
- In the Senate, a small number of closely contested races are likely to determine control of the upper chamber.
- Individual candidates will continue to be key, as each party faces internal crises over their identity and national parties work to boost candidates that can win in November.
- Should control of Congress flip in 2022, expect a flurry of legislative activity during the "lame duck" session as Democrats try to clear the decks before the start of the 118th Congress.

2022 SH PAC Campaign Update

As of June 10, 2022, the SH PAC has received contributions and pledges from 159 individuals from 93 companies for a total of \$398,175. Contact Sheff Richey at sheff@ashaliving.org to make your 2022 SH PAC pledge.



2022 Chairman's Circle Event

Members who make a personal contribution of \$2,000 - \$5,000 to the Seniors Housing PAC in 2022 are eligible to attend the exclusive Chairman's Circle Event on November 2-3 in Sarasota, FL at the Ritz-Carlton. A special thank you to Alan Plush and Colleen Blumenthal of HealthTrust for their very generous support of this year's Chairman's Circle event.

For further information on any of the topics in this *Capitol Connection*, please contact:

David Schless
202.885.5560
David@ashaliving.org

Jeanne McGlynn Delgado
202.885.5561
Jeanne@ashaliving.org

Sheffield "Sheff" Richey
202.885.5563
Sheff@ashaliving.org

asha
American Seniors Housing
ASSOCIATION

For access to all links referenced in this *Capitol Connection*, please login to the "Members Area" of the ASHA website (www.ashaliving.org)

To receive login credentials,
contact Meghan Berton at
Megs@ashaliving.org